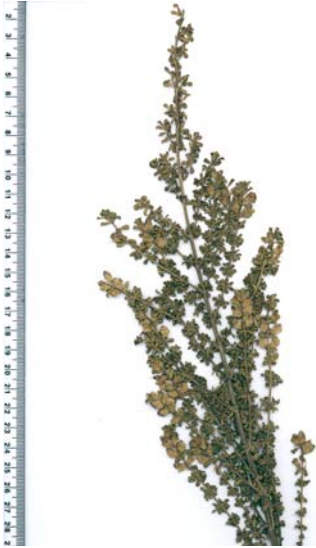


# *Prostanthera cuneata*



**FAMILY:** LAMIACEAE

**BOTANICAL NAME:** *Prostanthera cuneata*,  
Benth. in DC., *Prodr.* 12:560 (1848)

**COMMON NAME:** Alpine mint bush

**COMMONWEALTH STATUS:** (*EPBC Act*)  
Not Listed

**TASMANIAN STATUS:** (*TSP Act*) presumed  
extinct

*Prostanthera cuneata*.  
Tasmanian Herbarium specimens.

## Description

A widely spreading, strong-smelling shrub between 60-100 cm tall. The branches are covered with soft or long, shaggy hairs. **Leaves:** The leaves are stalkless (or nearly so) and arranged in opposite pairs along the stem (however sometimes they appear clustered). The leaves are wedge-shaped, thick and flat (or slightly folded in towards the upper leaf surface), dotted with glands and between 3-6 mm long. The leaf margins are slightly rolled under towards the lower surface. **Flowers:** The flowers are white with many violet, purple, red and yellow blotches or spots in the throat and tube of the flower, which is between 10-15 mm long. They are solitary on short stalks and borne in the axils (where the stem meets the leaf) close to the ends of the branches. The flowers have a hood and three large, drooping lobes, which are covered with sparse hairs. Flowering is from November to February (Flora of Victoria). **Fruit:** The fruit consists of 4 nutlets (description from Curtis 1967, Walsh & Entwistle 1996).

## Distribution and Habitat

On the mainland this species occurs in the alpine and subalpine heaths of Victoria and New South Wales. Apart from planted specimens, this species appears to be extinct in Tasmania (Kirkpatrick 1991).

## Key Sites and Populations

A key site for this species is Perth. *Prostanthera cuneata* is now presumed extinct in Tasmania.



## **Known Reserves**

This species is not currently known from any reserve.

## **Ecology and Management**

*Prostanthera* species are generally referred to as ‘mint bushes’ because of the aromatic foliage of many species. They prefer well drained, moist conditions and are not as sensitive as some other Australian plants to phosphorus. Propagation is easy from cuttings but seed can be slow to germinate. This species is predominantly insect pollinated (SGAP 2002).

Insects are the most likely pollination vector for this species (A. Hingston pers. comm.).

## **Conservation Status Assessment**

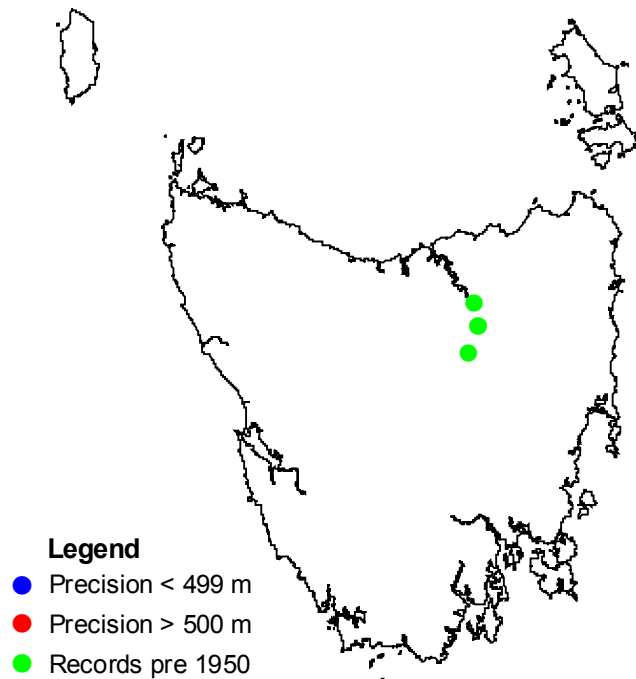
There is no immediate need for reassessment of *Prostanthera cuneata*.

## **Further Information**

- Curtis, WM 1967, *The Student's Flora of Tasmania*, Part 3, Government Printer, Hobart.
- Kirkpatrick, JB 1991, *Tasmanian Native Bush: A Management Handbook*, Tasmanian Environment Centre, Hobart.
- Society for Growing Australian Plants 2002, *Prostanthera rotundifolia*, <http://farrer.csu.edu.au/ASGAP/gall5a.html>, 19/09/02.
- Tasmanian Public Land Use Commission 1996, *Environment & Heritage Report Vol IV, Background Report*, Part C, Tasmanian Commonwealth Regional Forest Agreement, Hobart.
- Walsh, NG & Entwistle, TJ eds 1996, *Flora of Victoria*, Volume 3, Inkata Press, Melbourne.

## Tasmanian Distribution

(As per Threatened Species Unit records, May 2003)



### 1:25 000 Map Sheets

Delmont, Launceston, Longford.

Date last modified: 03/09/03